

## Wireless Energy Monitor

**Monitor household electricity use and learn where to save energy and save money**

Electricity costs are now extremely high. With with all the extra appliances and lighting in our homes and offices it is very difficult to keep in control of expenditure on electricity.

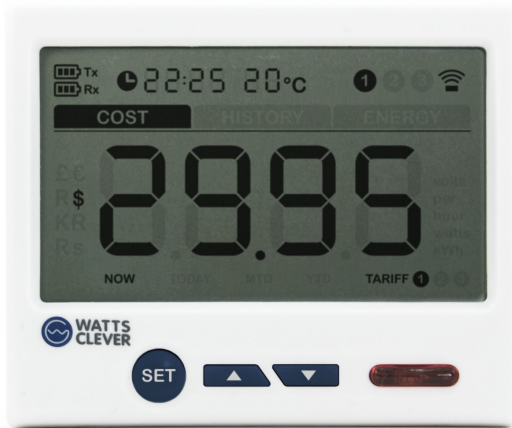
Wasted electricity can add up to significant amounts across weeks, months, and years. Often we just leave our lights, appliances, and equipment switched on or in standby mode, this is costing a lot of money and needlessly using energy.

Our Wireless Energy Monitor allows you to see how much electricity you are using now, and how much it costs. It will instantly display what the effect of turning off individual appliances, Hi Fi & computer equipment, lights, electric heaters etc has on your electricity costs.

You can then ensure that you turn off, or use equipment, lights, and appliances in a more efficient way. Saving you money, saving energy and carbon emissions.

The Watts Clever range of Energy-Watch Monitors and EASY-Off Sockets help people and companies to assess their energy use and to take steps to reduce it.

Our products ensure that this becomes a simple operation and something that will be done automatically, or with the minimum of thought.



## Main specifications

- Product Dimensions: 88 (L) x 74 (W) x 43 (H) mm
- LCD Display Dimensions: 79(L) x 48.5 (H) mm
- Transmitter Dimensions: 90.5 (L) x 72 (W) x 44.5 (H) mm
- 2 Transmitter batteries 'C' Cell (supplied) last for over 2 years
- Mains adaptor powered display unit
- Display also works off 3 x 'AAA' cell batteries for short periods (not supplied)
- Wireless transmission: 433 MHz SRD band
- Maximum rated sensor current = 100 A
- Min current sensitivity: 0.1A
- Accuracy within 5%
- Max cable size: 30mm
- LCD segmented display
- Display current power & cost
- Shows forecast for day, week, month
- Works with 1,2, or 3 phase power supply
- 80- 265 volts operating range
- Data transmitted every 6 seconds
- Data can be downloaded via USB cable
- Stores up to 2 years of data
- Clock, temperature, and channel displayed
- Supports up to 15 channels



## How it works

The Wireless Energy Monitor comprises of a Sensor / Transmitter Unit and Sensor Clip (clamp), which measure your household electricity usage at your electricity meter, and a portable Display Unit which receives information from the Sensor / Transmitter Unit via radio frequency signal. The transmitter is battery powered and the receiver unit mains powered making installation extremely simple and straight forward.

The Sensor / Transmitter Unit uses magnetic field sensing technology to measure the current being consumed from the small magnetic field that is present around your electricity meter power cable. This reading is converted into the power being used and is then transmitted wirelessly to the display unit which may be located up to 40 metres away. (The actual distance depends upon the number and density of walls and floors the signal is transmitted through).

Households that use The Wireless Energy Monitor are able to see their energy usage in real time as their lights and appliances are turned on and off, as well as daily high and low usage readings and monthly and yearly totals. This information allows people to understand the impact of the various electrical devices in their homes in terms of their direct energy cost to them.

Through using The Wireless Energy Monitor you can save money on your electricity bills as you become more aware of the energy you use and help reduce your impact on the environment.

Product Code: EW4008

[www.wattsclever.com](http://www.wattsclever.com)

FC CE RoHS  
Made in China